

**TERRENCE L. THORNHILL ARCHITECT**

2715 ST. ANDREWS LOOP  
SUITE "A"  
PASCO, WA.  
99301

509-547-8854  
FAX 509-547-8912  
ttharch@thornhillarchitect.com

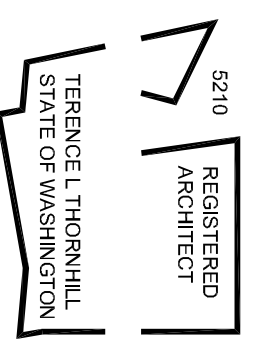
A Professional Service Corporation



MEMBER  
AMERICAN INSTITUTE OF ARCHITECTS

These drawings are intended for use solely with respect to this project and are the property of  
TERRENCE L. THORNHILL Architect Inc. P.S.  
which reserves all common law, statutory, copyright and other rights.

DRAWN BY: TT  
CHECKED BY: TT  
PHASE SD  
REVISION NO.



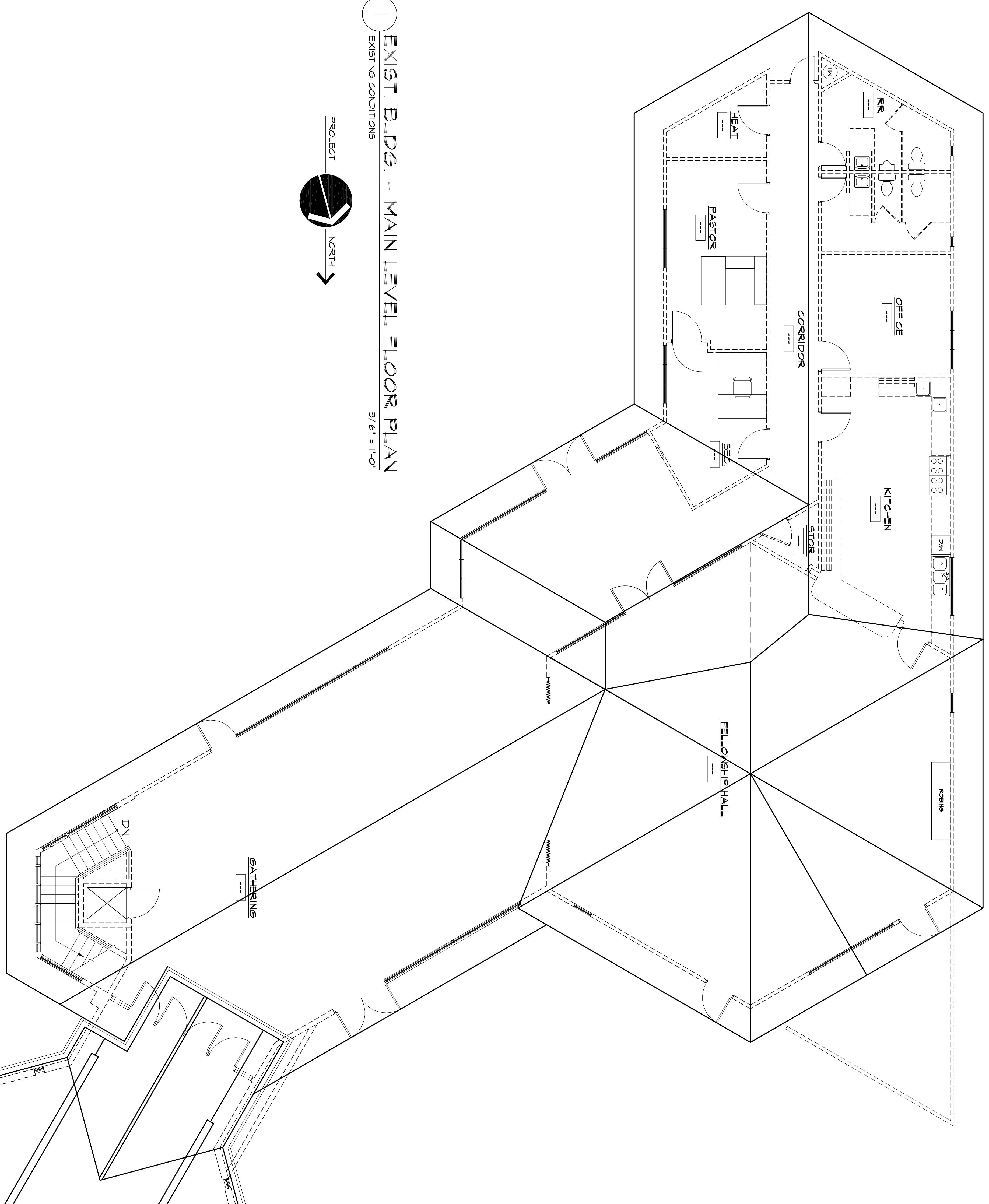
LORD OF LIFE LUTHERAN CHURCH

KENNEWICK, WA

MAIN LEVEL FLOOR PLAN EXIST. BLDG.

**3.2E**  
211-119

SEPTEMBER 25, 2011  
1119-PLN10



1 EXIST. BLDG. - MAIN LEVEL FLOOR PLAN  
EXISTING CONDITIONS  
3/16" = 1'-0"



PROJECT

NORTH